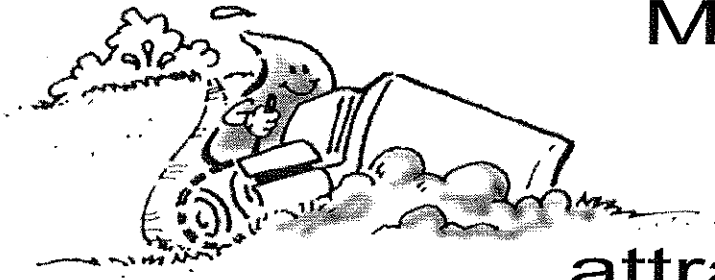


Water Source

Business, agriculture, recreation and communities — a partnership for water quality



Making the Grade

workshops

attract large crowds

About 100 area city, planning, development and business representatives attended the March 28, "Making the Grade; Applying Practices that Work," workshop held at the Spring Hill Church of Nazarene.

Thomas Schueler, executive director of the Center for Watershed Protection, and Jennifer Zielinski, Watershed Engineer for the Center for Watershed Protection, spoke to participants about stormwater pollution, habitat and biodiversity, watershed planning, aquatic buffers, better site designs, erosion and sediment controls, stormwater management practices and watershed stewardship.

Workshop participants went to field demonstrations in two Spring Hill locations, which are under development, the BlackHawk and Victory Woods subdivisions. Five area

businesses demonstrated products that aid in reducing and controlling pollution, sediment and soil erosion on construction sites.

The day's light rain played a major role in the findings.

The field demonstrations showed their effectiveness said Janet McRae, executive director of the Hillsdale Water Quality Project.

"The weather played into our hands," McRae said. "The heavy overnight rain enabled participants to see exactly which areas need improvements to better manage soil erosion in the subdivisions. The companies' products vividly displayed a decrease in runoff into the streets and storm water drainage areas."

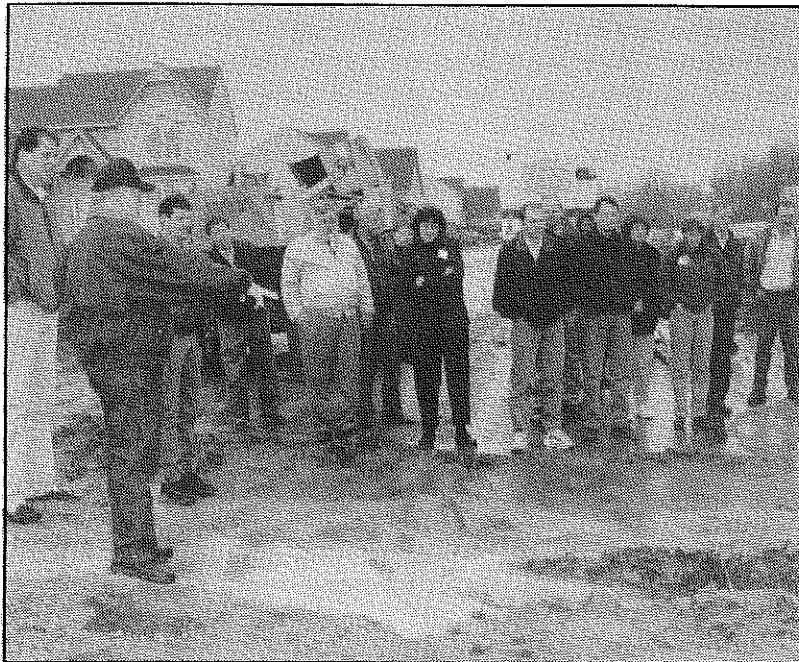
Scott Shields, Kansas Department of Health and Environment, and Ralph Summers, Environmental Protection Agency, presented information about site permits and plan requirements and the National Pollutant Discharge Elimination System (NPDES) permit, Phase II for small construction program.

"Making the Grade: Development with an 'A' for Environment" was the first of the two workshops. Held in January, it also highlighted the detrimental effects of polluted stormwater runoff.

Both workshops have been funded through a \$50,000 grant from the Environmental Protection Agency. The grant will also fund a public display for community groups to use, and a storm drain stenciling project.

The project, sponsored by the Lake Region RC&D, is also funded by local private, corporate and municipal contributions, in addition to an EPA grant administered through KDHE.

For more information about the project or how to form or join a storm drain stenciling team, contact the office at 913-829-9414.



Participants tour erosion control products in the Victory Woods subdivision. Virgil Beavin, BWI Companies, left, explains how one of the products work. BWI Companies was among five businesses that demonstrated their products at the workshop.

Mark your calendar ✓

April

- 12 14th Annual Arbor Day/Earth Day Tree Planting, US Army Corps of Engineers, Hillsdale Lake.
- 13 EQIP cost-share deadline for application, 913-764-1931.
- 21 Corps of Engineers at Hillsdale Lake Office will open on weekends.
- 22 Earth Day.
- 28 Corps of Engineers at Hillsdale Lake hole Nature Trail Improvements Day. Volunteers needed.

May

- 12 Bike Rodeo, Martin Creek Park, Edgerton, (913) 893-6231.

Look for HWQP displays in the upcoming months at...

June-Edgerton Frontier Days

August- Johnson County Fair, Gardner, Spring Hill Fall Festival, Spring Hill,

Sept. 15, HWQP's Race for the Lake, registration begins at 7 a.m., race begins at 8 a.m. (913) 829-9414.

Project Information

The Hillsdale Water Quality Project, initiated in 1993, is a nonprofit corporation working to protect the future of the lake, which is aging faster than anticipated.

The project monitors the water quality of the lake and its tributaries, offers water-related educational programs for groups of all ages and assists landowners who are willing to implement pollution-

prevention practices.

As communities within the Hillsdale watershed grow and develop, pollution-prevention practices are needed to protect the area's natural resources.

Volunteers serve on the board of directors or four committees to help make decisions about the protection measures that will be most effective for the lake.

Fishing Forecast for Hillsdale Lake during 2001

Provided by Craig Johnson, Kansas Department of Wildlife & Parks. Find the complete report online at www.kdwp.state.ks.us or call Craig with questions at 913-894-9113, extension 15.

	Forecast	2000 Sampling results
Largemouth Bass	Fair	<ul style="list-style-type: none"> ◆ Density remains similar to last year. ◆ Overall size of largemouth bass increased but the downward trend of density continues. ◆ Anglers should expect slightly slower action in 2001 but once a fish is hooked, it should be a nice one. ◆ Minimum length 18".
Walleye	Good	<ul style="list-style-type: none"> ◆ The 2000 fall test netting sample shows a 72% increase in walleye density over the 1999 sample. This is the highest recorded catch of walleye in the history of the reservoir. ◆ The highest percentage of the total stock catch fell in the 15 to 20 inch length group and good numbers of 20" and greater fish are available. The largest walleye sampled was 8.8 lbs. ◆ Minimum length 18".
Crappie	Good	<ul style="list-style-type: none"> ◆ The 2000 sample yielded the second highest stock catch of crappie in the history of the reservoir, but also yielded the second lowest catch of young fish, indicating that the 2000 spawn productivity was well below average. ◆ The density is greater than last year, while the overall size of the crappie has decreased. Fewer fish over 12" will be available in 2001 than in years past.
Channel Catfish	Good	<ul style="list-style-type: none"> ◆ Densities increased, however overall size decreased slightly. ◆ The bulk of the sampled channel catfish fell into the 11 to 16.4 inch length group, with slightly decreased percentages of the larger length groups.
White bass	Poor	<ul style="list-style-type: none"> ◆ Catch rates dropped dramatically and returned to pre-1998 levels. ◆ A total of 13 white bass were sampled during 2000. ◆ This species has not been stocked in the lake and struggles to establish itself.

Membership continues to grow

Please join us in welcoming our new members and recognizing those who have renewed their project memberships.

🔹 New Members

★ Recently Renewed Members

Individuals

(\$15 annual contribution)

- ★ Jessica Baetz
- Hanley Barker
- Betty Chaney
- Bennie Erwin
- 🔹 Gale Garber
- ★ Lee Quaintance
- Joseph Rowe
- Allan Soetaert
- Debbie Smith
- ★ Dick Weisser
- Joe Yelton

Families

(\$20 annual contribution)

- 🔹 Tom and Kay Bach
- Jim Bell and Julie Lewis-Bell
- Francis and Eloise Bennett
- Bill and Connie Coulter
- 🔹 Dennis and Pat Crownover
- 🔹 Ben and Barbara Donovan
- Walter and Suzanne Dotson
- Morris and Myrtle Eastland

Families (continued)

- ★ Harold and Marilyn Erickson
- Dale and Jean Everhart
- Damon and Debbie Frizzell
- David D. and Diana Green
- Mr. and Mrs. Carl F. Gump
- ★ James and Linda Heimbach
- Marshall Hitchcock
- ★ Al LeDoux
- Robert and Janet McRae
- Warren and Mary Medlin
- Dr. John and Constance Murphy
- Ken and Annalee Nelson
- 🔹 Darrell and Juanita Paris
- Richard and Alice Piezuch
- 🔹 Dick and Sue Redinger
- Teresa Reeves
- 🔹 Larry and Carrie Stricker
- Larry and Debra Sumner
- Mike, Becky and Ryan Stewart
- Judith Taggart
- Jack and Gloria Weiss
- Eugene Wetzel

Small Business Members

(\$100 annual contribution)

Coldwell Banker New Horizons, Dale Harsh
 Drs. Hawks, Besler & Rogers

Corporate members

(\$250 annual contribution)

- Executive Beechcraft
- Haz-Mat Response
- ★ Johnson County Stormwater Management
- KCP&L
- KPL — Western Resources
- Mr. Goodcents Subs & Pastas
- Niffie Printing
- Ponzer Youngquist, P. A.
- ★ Sprint

Municipalities

(Contributions vary)

- ★ City of Edgerton
- ★ City of Gardner
- ★ City of Spring Hill
- Miami County Conservation District
- ★ Rural Water District No. 2 of Miami County
- ★ Rural Water District No. 7, Johnson County

Field Rep brings GIS, GPS experience


Jason Downs, the project's field representative as of late October, will organize the Hillsdale Water Quality Project's upcoming storm drain stenciling program.

Jason said he is looking forward to the stenciling project, especially because global positioning systems will be used to mark the drain locations. He gained experience with GPS equipment while surveying sewer lines and waterlines for the city of Olathe.


After growing up in Leoti, a west-central Kansas town about 40 miles from the Colorado border, Jason earned a land surveying degree, with an emphasis in Geographical Information Systems, from K-State in Salina. He also earned a bachelor's degree in geology from the University of Kansas.

The GIS programming Jason performed for KU's geology department will prove helpful as he updates the same information regarding land-use changes in the Hillsdale watershed.

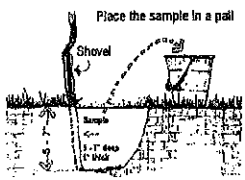
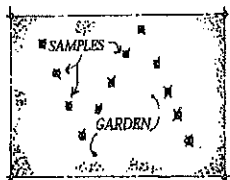
Are you artistic and want to earn some extra money?
 The Hillsdale Water Quality Project needs you!
Call today (913) 829-9414.



Free Soil Tests



Bring this **Coupon** along with up to 3 soil samples to the
 K-State Research and Extension Office 20 S Gold, Paola, Ks
 (This offer good for Miami County residences only)

Taking a soil sample

For each area you wish to have tested, collect about 5 or more samples with a spade or trowel from the top 5 to 7 inches of the soil into a small pail. Blend them together. Place one cup of the blended soil into a re-sealable plastic bag. Label the bag with the name of the area, for example, *perennial bed*.

Bring the sample to the K-State Research and Extension office, 20 S Gold, Paola, Ks

The **Free** samples are provided in cooperation with the Miami County Conservation District financed by a grant from the State Conservation Commission NPS Pollution Control Fund.

Lake Region RC&D
Hillsdale Water Quality Project
P.O. Box 23
One New Century Parkway Suite 115
New Century, KS 66031

Nonprofit
U.S. Postage PAID
Gardner, KS
Permit No. 49

Water Source

CURRENT RESIDENT
SPRING HILL KS 66083

The Hillsdale Water Quality Project is funded by local private, corporate and municipal contributions, in addition to an EPA Section 319 Nonpoint Source Pollution Control Grant A0003186-99 administered by the Kansas Department of Health and Environment.

Volunteers needed for drain stenciling

Wanted: People of all ages to play with sophisticated toys and roam the streets painting fish.

No, it's not Gameboy or graffiti. Groups of volunteers are needed this spring to help paint the message "Dump No Waste Drains to Hillsdale Lake" and the image of a fish near storm drains.

Global positioning systems will be used to identify the drains that are stenciled as part of a Hillsdale Water Quality Project education campaign to remind area residents that pollution of Hillsdale Lake and other water bodies begins with street drains.

"Most people never think about storm drains and where they lead," said Tom Bach, chairman of the project's volunteer board. This stenciling program will help increase awareness that stormwater is not cleaned or processed before it empties into area waterways.

Groups of volunteers will stencil drains throughout the Hillsdale watershed area. Each group painting the stencils will also mark the storm

drain location with a Garmin global positioning system and distribute information about how individuals can help prevent further pollution.

"While, everyone values clean water, most of us still believe big business is the biggest source of pollution," Bach said. In reality, according to EPA, more pollution comes from the combined effects of common daily actions that rain and snowmelt rinse from streets, lawns or farmlands.

Rainwater washes down streets and parking lots, driveways and sidewalks, roofs and yards, carrying water and everything it picks up into a storm drain. A series of pipes collect that rainwater and deposit it directly into the nearby lake, stream, groundwater, wetland or river.

This means that lawn care chemicals and grass clippings, litter and pet wastes, automotive products like used oil and antifreeze, plus other wastes are dumped untreated into waterways.

Pollution and harmful

bacteria go straight into local fish habitat, swimming areas or drinking water sources.

Individuals can reduce this problem by making small changes in daily habits. Its simple! Dump nothing down the storm drain you wouldn't swim in or drink.

- Recycle used oil and fix oil leaks.
- Use less fertilizer on lawns (many people over fertilize).
- Avoid pesticides and herbicides.
- Compost yard trimmings sweep the driveway and sidewalk instead of using a hose.
- Pick up pet wastes and bury or flush down toilet.
- Wash vehicles on the lawn, not to the driveway.
- Don't litter.
- Take leftover paints and cleaning or garden chemicals to the local household hazardous waste collection site.

For more information about how to form or join a storm drain stenciling team, contact the office at 913-829-9414 and look for the volunteers in your neighborhood!