

Water Source



Business, agriculture, recreation and communities — a partnership for water quality

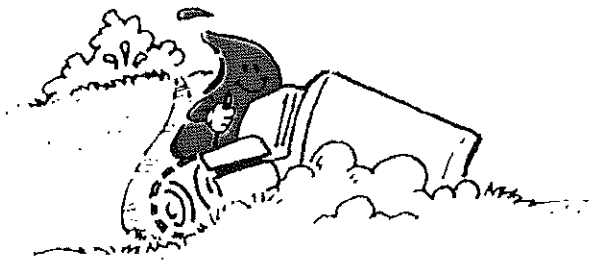
Making the Grade: Development with an 'A' for Environment

Area developers and specialists will provide hands-on tools during an upcoming workshop to help increase profits, improve natural resources and create better communities through smart development.

Making the Grade: Development with an 'A' for Environment, sponsored by Hillsdale Water Quality Project, will take place from 8:30 a.m. to 3 p.m. Jan. 30, at the Johnson County Fairgrounds, 136 E. Washington in Gardner.

"Hopefully this workshop will help build a bridge between government, developers and citizens," said Rob Schwarz with Johnson County Planning. "Developers' input may help create ordinances that are easier to understand, more flexible for alternative designs that are economically viable and yet still address citizen concerns such as water quality and open space."

Schwarz will provide information on stormwater regulations in each community throughout the Hillsdale watershed and how they compare with each other.



A full schedule of dynamic speakers will give tips on how to tailor stormwater pollution prevention plans to a specific site, avoid delays in construction, obtain proper certification and select effective management practices.

David Gale, a Lee's Summit developer, has first-hand experience reaping the economic benefits of environmentally friendly development. Gale will describe how developers can increase property values, decrease liabilities and create what the buying public wants, while protecting natural resources, particularly water quality.

Cheryl Cheadle, Blue Thumb coordinator for Oklahoma Conservation Commission, trains volunteers and coordinates water monitoring and pollution

prevention activities. Cheadle will help participants identify sediment as an issue.

Shirley Morrow, environmental scientist and erosion control specialist with Burns & McDonnell, will discuss the stormwater pollution prevention plan, certification, how to choose and successfully maintain best management practices.

Scott Shields, Kansas Department of Health and Environment, will provide examples of effective stormwater pollution prevention plans, discuss the permitting process and compliance with Phase II of the National Pollutant Discharge Elimination System.

Debbie Sumner, Natural Resources Conservation Service, and Phil Balch, State Conservation Service, will use interactive models to demonstrate the relationship between development and streams.

A \$10 workshop registration includes lunch and a CD Rom of resources. Call for reservations through Jan. 19 at 913-829-9414.

Corporate sponsors Henderson Civil Group, Olsson Associates, Ponzer Youngquist Consulting and Tetra Tech EM will each provide a **\$100 certificate** for four participants to use toward building permits in Miami or Johnson counties. Other door prizes, including a GutterBuddy and sporting goods, will be donated by Vance Brothers, ASP Enterprises, CSR Hydro Conduit, American Excelsior Company and Maccaferri Gabions. All participants will be eligible for the following discounts:

- free design assistance, buy one get one free design software, 15% product discount from Maccaferri Gabions
- 10% product discount through American Excelsior, including Curlex brand products and their Aspenwood biodegradable blankets
- 25% discount on one tank load of any Central Fiber product for hydroseeding or erosion control, a 10% discount on SPRAYMATT bonded matrix erosion fiber and one Second Nature hat with each minimum order of one full skid (40 bags)

The workshop is the first part of a program to educate about the detrimental effects of polluted stormwater runoff. The program is funded through a \$50,000 grant from the Environmental Protection Agency. It will also include a second workshop in the spring; a public display for community events; and a storm drain stenciling project.

Research supports priority area, Gardner

A recent report by K-State Researcher, Phil Barnes, confirms that the area designated as a priority for water quality protection in the Hillsdale watershed should continue to be a focus.

Barnes' findings verify that the Big Bull Creek subwatershed contributes a larger amount of pollution per acre into Hillsdale Lake, than do the other subwatersheds from Little Bull, Wade, Rock or Smith creeks. The Big Bull watershed is located in the north-central area of the Hillsdale watershed and receives effluent from the Gardner and Edgerton wastewater treatment plants.

"The center cells are still where we're getting the majority of contribution," Barnes said, in reference to the middle third area of the Big Bull Creek subbasin as shown in Figure 1. "We still have fields that need best management practices and buffers."

Barnes took satellite data of the watershed's topography and added it into a model developed by the U.S. Department of Agriculture that predicts nutrient movement.

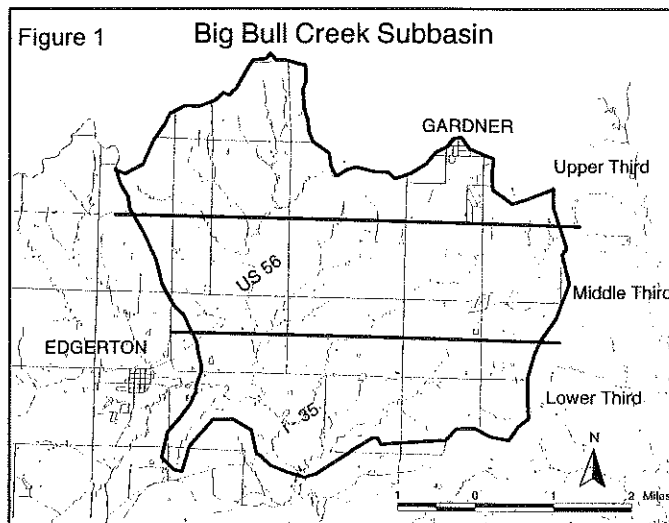
"The main pollutants of concern for Hillsdale are sediments and nutrients, especially phosphorus. Pesticides, such as Atrazine, are not a major TMDL factor," Barnes said.

The project contracted Barnes' research in 1999 to prepare for the state's process of setting Total Maximum Daily Loads for various pollutants. His work has been funded through an Environmental Protection Agency 104b3 grant.

Natural Resources Conservation Service can offer educational, technical and cost-share assistance for landowners, but only upon request.

"People have to want the help. We need to recommend the programs," he said, referring to project volunteers.

One program that provides cost-share assistance is the Environmental Quality Incentive Program through Johnson County NRCS. This year will be the final year



The section labeled "middle third" contributes a heavy load of pollutants to Hillsdale Lake, according to Barnes' research.

for the Hillsdale watershed to be a priority EQIP watershed. The deadline to sign up for EQIP is April 13. Call 913-764-1931 for more information.

"The watershed is in rapid transition from rural/agricultural to urban sprawl," Barnes said. Most contamination from urban areas relates to soil disturbed during development, as well as lawn and pet care. With proper care, lawns can greatly improve the environment. However fertilizers and pesticides can be harmful if they end up in water supplies by washing down storm drains or if the soil they attach to erode.

Barnes has been excited about the improvements he has seen throughout the watershed. He noted that the soil loss estimates for Hillsdale of one-half to one ton per acre are encouraging compared to the two to five tons per acre typical in other Kansas lakes.

"This is good, but we'll have to do better to see improved lake clarity," he said.

Mark your calendar ✓

January

- 18 Hillsdale Water Quality Project Annual Meeting - Specific TMDL allocations for Hillsdale, 5:30 p.m., 128 E. Park, Gardner. 913-829-9414 See page 4.
- 26 Prescribed Burning Workshop, Johnson County, 913-764-6300
- 27 Prescribed Burning Workshop, Miami County, 913-294-4306
- 30 Making the Grade: *Development with an 'A' for Environment*, Johnson County Fairgrounds, 136 E. Washington, Gardner, 8:30 a.m. - 3 p.m., 913-829-9414
- 30 Miami County Conservation District Annual Meeting, 913-294-3751 RSVP by Jan. 26.

March

- 28 A second workshop on environmentally friendly development, 913-829-9414

April

- 13 EQIP cost-share deadline for application, 913-764-1931
- 22 Earth Day

A look ahead for Wildlife & Parks

This spring, the Kansas Department of Wildlife and Parks at Hillsdale Lake plans to re-evaluate and set new goals for the next five years regarding:

- ◆ hunting practices
- ◆ wetland development
- ◆ conservation measures
- ◆ habitat development



A public comment period on these topics will begin in the spring. For more information, contact Tim Schaid, public lands manager, at 913-783-4507.

Welcome new members

Please join us in welcoming our new members and recognizing those who have renewed their project memberships. Two more levels are offered to recognize those generous contributors who supplement their annual membership: **Friend of Hillsdale Lake** with an additional \$100 donation and **Patron of Hillsdale Lake** with an additional \$1,000 donation.

Individuals (*\$15 annual contribution*)

☹ Jessica Baetz
☹ Hanley Barker
Betty Chaney
Bennie Erwin
Al LeDoux
Lee Quaintance
Joseph Rowe
Allan Soetaert
Debbie Smith
Dick Weisser
James Wilson
Joe Yelton

Families (*\$20 annual contribution*)

☹ Tom and Kay Bach
Jim Bell and Julie Lewis-Bell
Francis and Eloise Bennett
Jared and Angi Bright
Bill and Connie Coulter
☹ Walter and Suzanne Dotson
Morris and Myrtle Eastland
Harold and Marilyn Erickson

☹ New Members

★ Recently Renewed Members

Families (continued)

Dale and Jean Everhart
Damon and Debbie Frizzell
David D. and Diana Green
★ Mr. and Mrs. Carl F. Gump
James and Linda Heimbach
Tony and Cathleen Holt
Robert and Janet McRae
☹ Warren and Mary Medlin
Danny and Diana Meisinger
Dr. John and Constance Murphy
Ken and Annalee Nelson
Richard and Alice Piezuch
Teresa Reeves
Paula Selby
☹ Larry and Debra Sumner
Mike, Becky and Ryan Stewart
Judith Taggart
☹ Jack and Gloria Weiss
Eugene Wetzel

Small Business Members (*\$100 annual contribution*)

Coldwell Banker New Horizons, Dale Harsh
Drs. Hawks, Besler & Rogers

Corporate members (*\$250 annual contribution*)

Executive Beechcraft
Haz-Mat Response
Johnson County Stormwater
Management
KCP&L
★ KPL — Western Resources
Mr. Goodcents Subs & Pastas
Niffie Printing
Ponzer Youngquist, P. A.
Sprint

Municipalities (*Contributions vary*)

City of Edgerton
City of Gardner
City of Spring Hill
★ Miami County Conservation District
Rural Water District No. 2 of Miami County
Rural Water District No. 7, Johnson County

Lend a Helping Hand

The project still needs a volunteer to help with office work and an overhead projector for professional presentations. If you have a spare projector or spare time, please call 913-829-9414. Donations are tax-deductible.



Water willow plantings line Hillsdale shore

Since last July, Kansas Department of Wildlife and Parks planted more than 1,505 feet of Hillsdale Lake's shoreline with water willow (*Justicia americana*). Increasing aquatic vegetation along the water's edge will prevent excessive erosion and provide crucial fish habitat.

Two techniques were used for the plantings: the burrito and sprigging. In the burrito technique, the water willow is contained in a net wrap that is secured in shallow water

along the shoreline. When sprigging, an individual water willow is planted into the substrate to secure the roots. Sprigged plants can be placed in deeper water than the burritos, which will hopefully speed the vegetation's establishment.

A nursery area, located on the southeast side of Hillsdale Point, received more plantings than any other area of the lake. The nursery should produce enough vegetation to be harvested and transplanted to other parts of the reservoir,

eliminating the need to haul donor plants from neighboring lakes.

Water willow was planted on the several shorelines: in coves of upper Little Bull, at the Hillsdale Point boat ramp; in two coves of Scott Branch, and the Big Bull arm.

It will likely take several years for the willow to become established. For further information about park projects, contact Craig Johnson, KDWP District Fisheries Biologist, at 913- 894-9113.

Lake Region RC&D
Hillsdale Water Quality Project
P.O. Box 23
One New Century Parkway Suite 115
New Century, KS 66031

Nonprofit
U.S. Postage PAID
Gardner, KS
Permit No. 49

Water Source

CURRENT RESIDENT
NEW CENTURY KS 66031

The Hillsdale Water Quality Project is funded by local private, corporate and municipal contributions, in addition to an EPA Section 319 Nonpoint Source Pollution Control Grant A0003186-99 administered by the Kansas Department of Health and Environment.

Annual meeting to highlight Hillsdale TMDLs

It's time to get specific.

General discussions on TMDLs have been a hot topic for the past six months, as landowners have become educated about the total maximum daily load process in progress by the Kansas Department of Health and Environment.

A TMDL is a limit on the amount of various pollutants that streams and lakes can accommodate without creating health concerns.

The first draft of specific total maximum daily load allocations for lakes and streams within the Hillsdale Lake watershed will be available during the project's annual meeting Jan. 18. The meeting will take place at the Gardner Senior Citizens Building, 128 E. Park, and is open to the public.

"The TMDLs I bring will be rough drafts, so people can comment on them and give their input," said Bonnie Liscek, environmental analyst with KDHE. Liscek will provide drafts of the TMDLs for Atrazine and eutrophication relating to Hillsdale Lake. She will also be available to answer questions.

.....
▪ **5:30 p.m. Jan. 18**
▪ **Gardner Senior Citizens**
▪ **Building, 128 E. Park**
▪ **RSVP by Jan. 12**
▪ **913-829-9414**
.....

Among the 13 lakes studied in the Marais des Cygnes Basin, which includes Hillsdale, eutrophic conditions were the predominant impairment. This is typically caused by large amounts of algae.

The state expects to conduct public forums in March and April prior to a May formal hearing. KDHE has also agreed to have a February briefing for area landowners.

Persons interested in being notified about the meeting should contact the project by calling 913-829-9414 or sending an e-mail to hwqp@birch.net. The state's final load limits must be submitted to the Environmental Protection Agency before June 30.

"Public input into this process is vital to insure that the limits established are achievable. A complicated issue, this process could be overlooked. As a result, failing to participate in the process will have a long-term impact," said Janet McRae, executive director of the Hillsdale Water Quality Project.

The state's TMDL process focuses on citizen input. KDHE's web site at <http://www.kdhe.state.ks.us/tmdl/> gives updated information on the process and provides a complete list of the areas within the basin targeted for study.

In other business during the project's annual meeting, a vote will be taken for two board members' positions that are expiring: Tom Bach and Joe Yelton. Both are family/individual members with three-year terms. A quorum of the corporation's membership will be required for this election.

A light dinner will be provided. Reservations can be placed through Jan. 12 by calling 913-829-9414.